

DEALER SETUP INSTRUCTION



P/N XXXXXXXX

APPLICATION

2016 Torpedo

BEFORE YOU BEGIN

Read these instructions and check to be sure all parts and tools are accounted for. Please retain these installation instructions for future reference and parts ordering information.

TOOLS NEEDED

- Torque Wrench
- Side Cutting Pliers
- Pliers
- Wrenches: 12mm
- Hex Sockets: 8mm, 10mm, 17mm, 19mm, 22mm
- Philips Screwdriver: #2

SETUP TIME

Approximately: 60 Minutes

IMPORTANT

Your Dealer Setup Instruction is exclusively designed for this vehicle. Please read the installation instructions thoroughly before beginning. Installation is easier if the vehicle is clean and free of debris. For your safety, and to ensure a satisfactory installation, perform all installation steps correctly in the sequence shown.

SETUP PREPARATION

Tools Needed

Side Cutting Pliers

1. Remove plastic straps using side cutting pliers



2. Remove Cardboard Top



3. Remove loose components from the vehicle chassis and set safely aside for installation



2. Attach front shock to lower strut and frame mount



3. Tighten to Torque Specification

Hardware

Shock Bolt and Lock Nut: M8 x 1.25 x 30, M8

Torque

17 ± 4 lb-ft (23 ± 2 Nm)

4. Attach Strut to Upper Suspension Arm



5. Tighten Nut to Torque Specification

Hardware

Strut Upper Castle Nut: M10

Torque

52 ± 3 lb-ft (70 ± 5 Nm)

6. Install Cotter Pin
7. Separate Tail of Cotter Pin
8. Install Rubber Dust Seal over joint
9. Attach Strut to Lower Suspension arm

INSTALLATION – FRONT SUSPENSION

Tools Needed

Pliers

Hex Sockets: 10mm, 17mm

Wrenches: 12mm

1. Elevate the Front of the Vehicle

CAUTION

Serious injury may result if the vehicle tips or falls. Be sure the vehicle is secure before beginning this procedure. Always wear eye protection.

10. Tighten Nut to Torque Specification

Hardware
Strut Lower Castle Nut: M10
Torque
52 ± 3 lb-ft (70 ± 5 Nm)

11. Install Cotter Pin
12. Separate Tail of Cotter Pin
13. Repeat Steps 1-12 for the other side of the vehicle

INSTALLATION – FRONT WHEELS

Tools Needed
Hex Sockets: 19 mm
Pliers
Air Compressor
Tire Pressure Gauge

14. Elevate the Front of the Vehicle

CAUTION
Serious injury may result if the vehicle tips or falls. Be sure the vehicle is secure before beginning this procedure. Always wear eye protection.

1. Inflate front tires to specification

MEASUREMENT
Wheel Pressure: 15 PSI (103 kPa)

2. Install wheels as shown (Valve Stem Out)



3. Install washer and castle nut
4. Torque Castle Nuts to Specification

Hardware
Front Wheel Castle Nut: M12 x 1.25
Torque
77 ± 3 lb-ft (105 ± 5 Nm)

5. Install Cotter Pin
6. Separate Tail of Cotter Pin

7. Install Rubber Dust Cover
8. Lower the front of the Vehicle

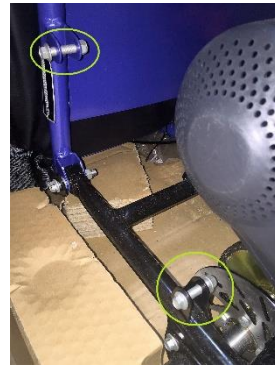
INSTALLATION – REAR SHOCKS

Tools Needed
Hex Sockets: 10 mm
Wrenches: 12 mm

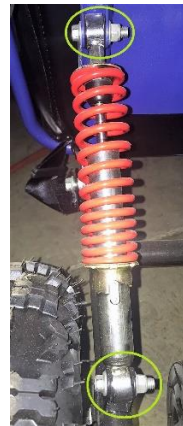
1. Elevate the Rear of the Vehicle

CAUTION
Serious injury may result if the vehicle tips or falls. Be sure the vehicle is secure before beginning this procedure. Always wear eye protection.

2. Remove bolts and nuts. Retain hardware for step 3.



3. Mount the Rear Left and Rear Right Shock Assemblies.



4. Tighten mounting bolts to specified Torque

Hardware
Shock Mounting Bolts: M8 x 1.25
Torque
17 ± 2lb-ft (23 ± 2 Nm)

INSTALLATION – REAR WHEELS

Tools Needed
Hex Sockets: 22 mm
Pliers
Air Compressor
Tire Pressure Gauge

1. Inflate rear tires to specification

MEASUREMENT
Wheel Pressure: 15 PSI (103 kPa)

2. With the rear of the vehicle remaining elevated, install the rear wheels.
3. Install wheels as shown (Valve Stem Out)



4. Install Washer and Castle Nut
5. Torque Castle Nuts to Specification

Hardware
Rear Wheel Castle Nut: M14 x 1.25
Torque
145 ± 10 lb-ft (195 ± 15 Nm)

6. Install Cotter Pins
7. Separate tail of cotter pin
8. Install Rubber Dust Covers
9. Lower the Rear of the Vehicle

INSTALLATION – STEERING WHEEL

Tools Needed
Hex Sockets: 8 mm

1. Mount the steering wheel to steering column using 3 M6 bolts
2. Torque Steering wheel bolts to specification

Hardware
Steering Wheel Mounting Bolts: M6x1x16
Torque
3.0 – 5.0 lb-ft (4.0 – 7.0 Nm)

3. Place cap over steering wheel as shown below.



ASSEMBLE – BRUSH GUARD

Tools Needed
Hex Sockets: 10 mm
Wrenches: 12 mm

1. **Loosely** Assemble the Brush Guard without the side arm bars

INSTALLATION – BRUSH GUARD

Tools Needed
Hex Sockets: 10 mm
Wrenches: 12 mm

1. Install the brush guard to vehicle
2. Attach the side arm bars
3. Torque all bolts to the following specification

Hardware
Brush Guard Mounting Bolts: M8 x 1.25 x 45
Brush Guard Lock Nuts: M8
Torque
15 ft-lbs (20 Nm)

4. The final result is shown below:



INSTALLATION – FINAL STEPS

1. Assembly Check

IMPORTANT

Check all nuts and bolts, cotter pins, wiring – routing and connections, cables, fuel line, switches, and tire pressures.

2. Fluid Fill

IMPORTANT

Check and fill the engine with the recommended oil.
Fill the fuel tank with the recommended Gasoline.
Both recommended values can be found in the specifications table of the Owner's Manual.

3. Grease all fittings

4. Turn on the ignition switch and verify the engine starts.

5. Warning Label Validation

Δ WARNING

You must confirm that all warning labels are in place and securely attached. This vehicle cannot be sold without proper labels in place

IMPORTANT

Reference the owner's manual for warning labels and locations. For a lost, missing, or damaged warning label please contact Hammerhead Off-Road.